

FACE READING STUDY CLASS TWO

TRAIT 33.

DISCRIMINATIVE — (brows set high) A high-brow; makes constant distinctions between people and things; selective; likes quality and formality; are naturally reserved. May appear “aloof” to others.



TRAIT 34.

AFFABLE — (brows set low) Friendly; does not make distinctions; pleasant to approach; easy to get along with; less formal style. At times may appear too familiar or even a “low brow” to others.



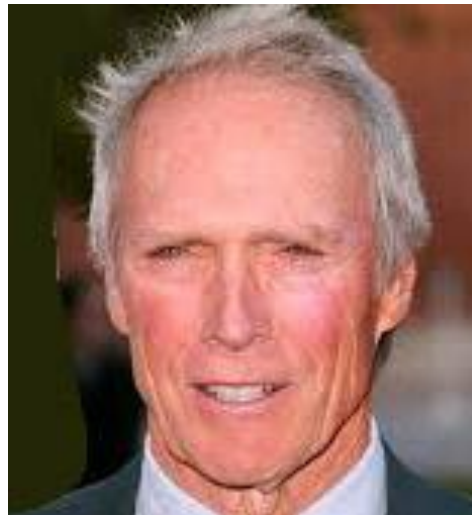
For the sake of comparison, high, medium and low is merely the measurement-term used to distinguish the energy force of a trait. There are not good or bad associations with the traits. All traits are valuable even though they express differently. As in life, there are two sides to everything.

The following photos will give you a comparison of what to look for as you make a study of faces and see the difference between high-set “high-brow” faces and low-set “friendly” faces. This is a very easy trait to spot and you can feel the energy force of it right away.

high-set brows



low-set brows



high-set brows



low-set brows



high-set brows



low-set brows



high-set brows



low-set brows



high-set brows



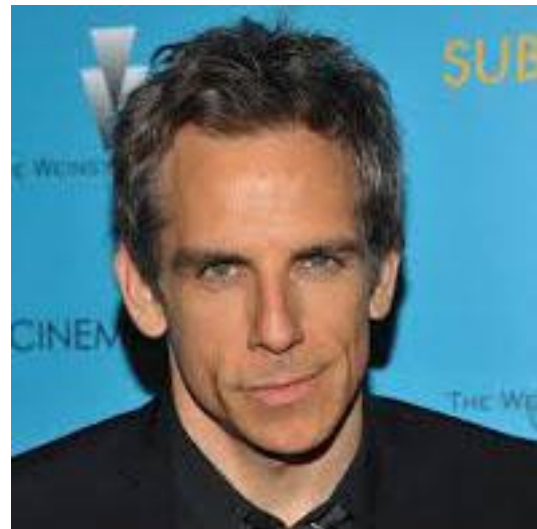
low-set brows



high-set brows



low-set brows



high-set brows



low-set brows



high-set brows



medium-set brows



low-set brows



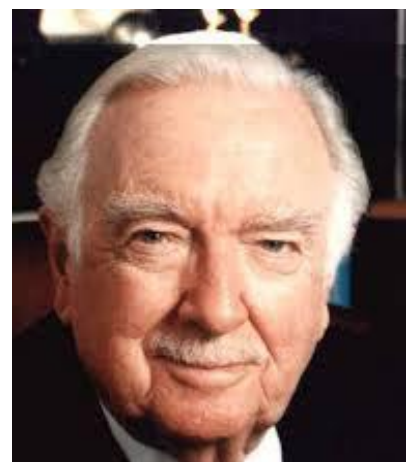
high-set brows



medium-set brows



low-set brows



high-set brows



medium-set brows



low-set brows



Women reshape and tweeze their brows so it is harder to determine the extremely low-set brows in women. However, in men it is very easy to see.

low-set brows



low-set brows



low-set brows



So it appears we have a lot of friendly guys running around and quite a few high-brow women as well..."keep off the grass unless I invite you to come in sort of mentality." I guess that figures.

brows.....on the higher-side



The greatest benefit is the value of empowered understanding as you interact with people socially and in business, especially in selling.

In artistic endeavors, this awareness serves your intuitive feel for drawing people, or describing characters in creative writing. And most of all, you are building a foundation of the universal language of lines and shapes to add to your knowledge.